



# GIS Mapping Services

## Center for Rural Health and Social Service Development

The Center for Rural Health and Social Service Development now offers GIS Mapping services to clients, on a fee-for-service basis, for a variety of needs. Some services are as simple as using data already collected and making maps using that data. For data to be eligible for mapping, it must have a geospatial component, or in other words, there must be a location component to the data. The location can involve coordinates, or a city, county, state, or country to which the data belong. The complexity of mapping can range from simple maps showing census data to complex maps showing the results of complex data analyses performed using GIS software.

### GIS Services

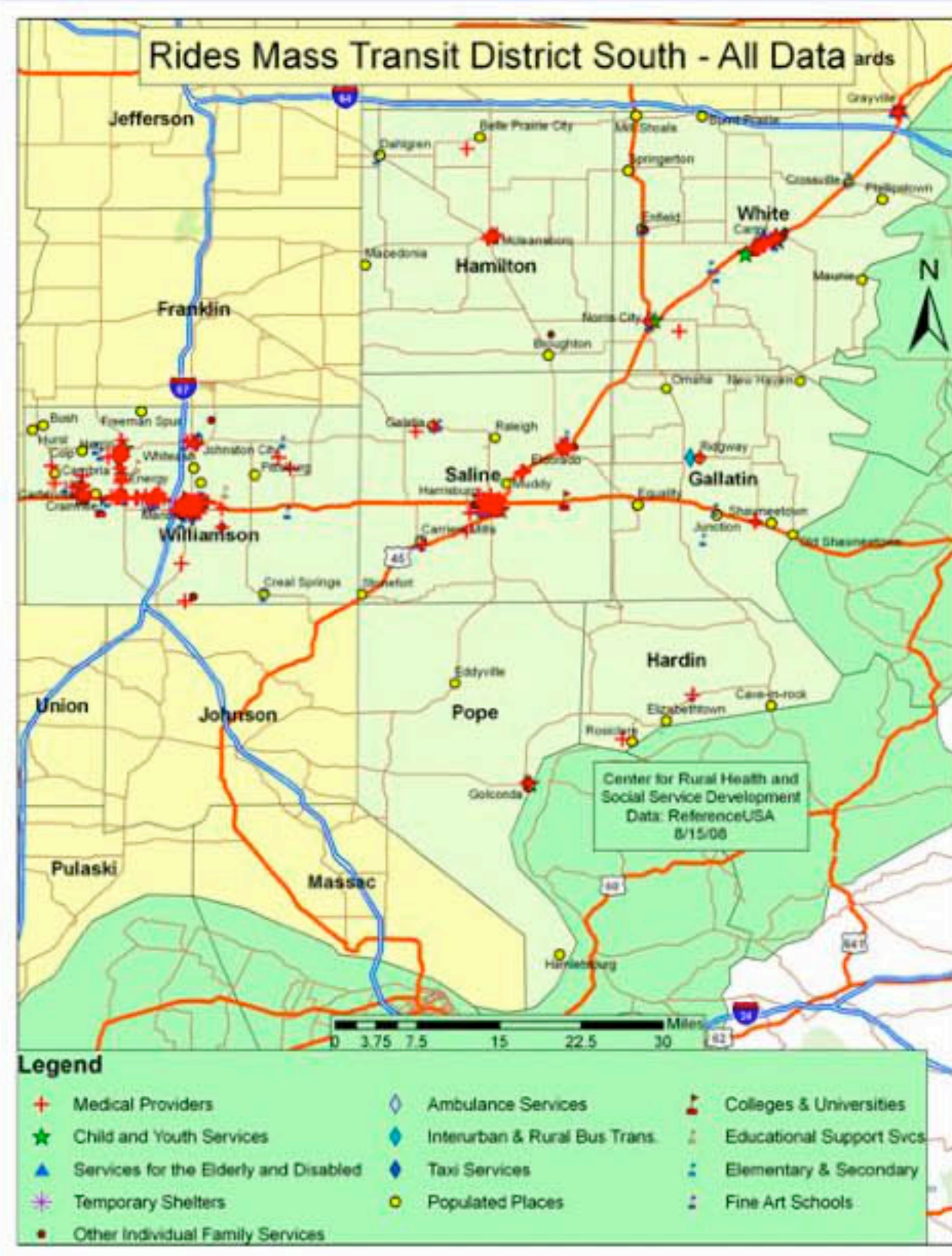
- Demographic Maps
- Census Data Maps
- Aerials photography with data overlay
- Data Collection
- Data analysis
- City/County/State data-level maps
- Large format printing (42" x 72" +)

### GIS Project Areas

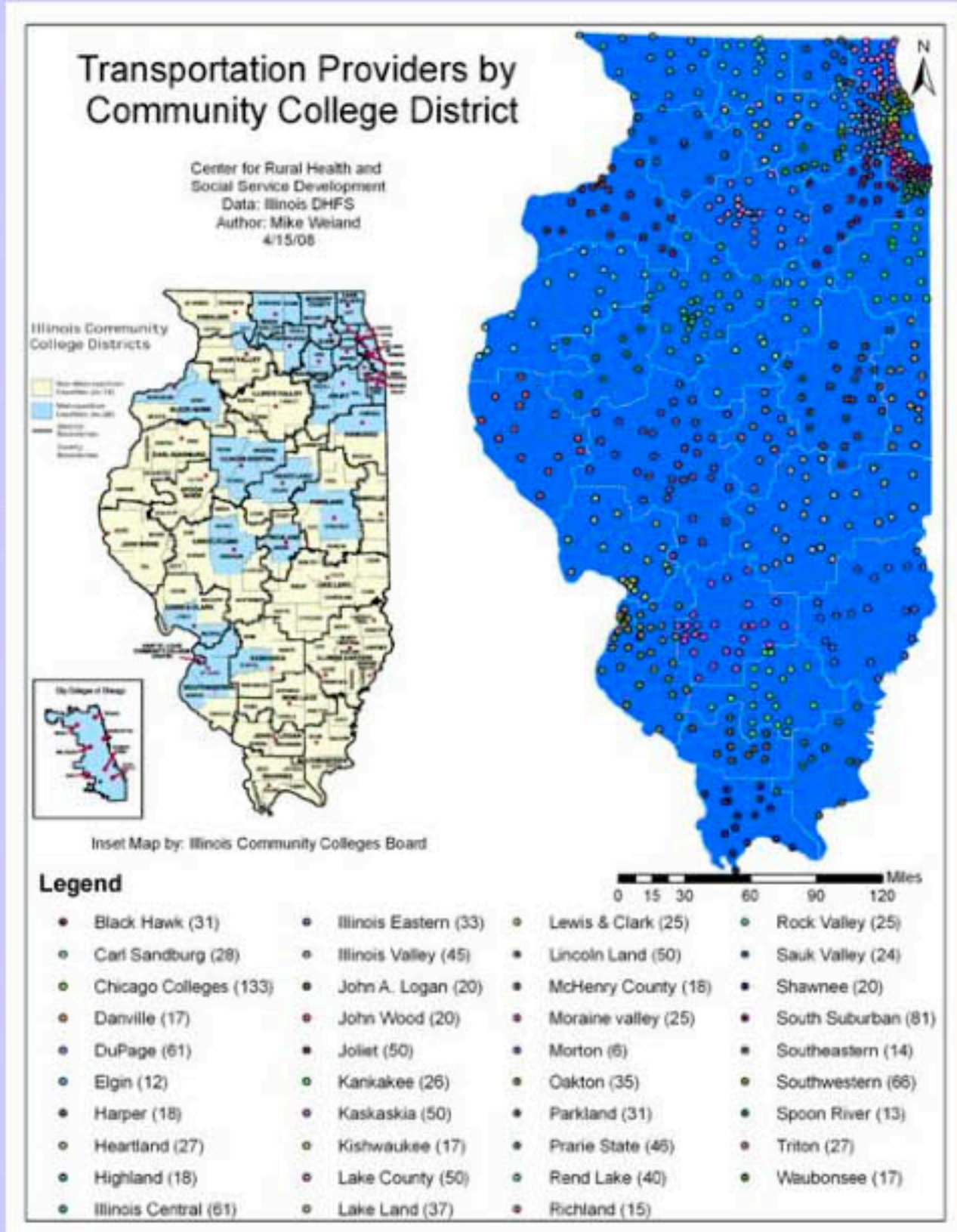
- Health-related research
- Grant-writing support
- Business-related maps
- Scientific research with a spatial component

### GIS Services Examples

- Collect data and provide maps for a project area
- Provide maps using an already-created database
- Add maps to a grant proposal
- Follow-up maps for a project report/results
- Perform feasibility analysis for a proposed site



E  
X  
A  
M  
P  
L  
E  
S



For more information please visit our website at: <http://www.siu.edu/~crhssd/services/gis.html>

Adam Lach  
(618)453-8454  
Room 224  
alach@siu.edu



Developing Healthier Communities

The two main services that comprise GIS Mapping are Data Collection and Processing and Data Mapping. Each of these services are provided at a different rate and each mapping project can involve varying degrees of either service. We are happy to work with projects large and small.

Please contact us for an estimate based on your mapping needs.